

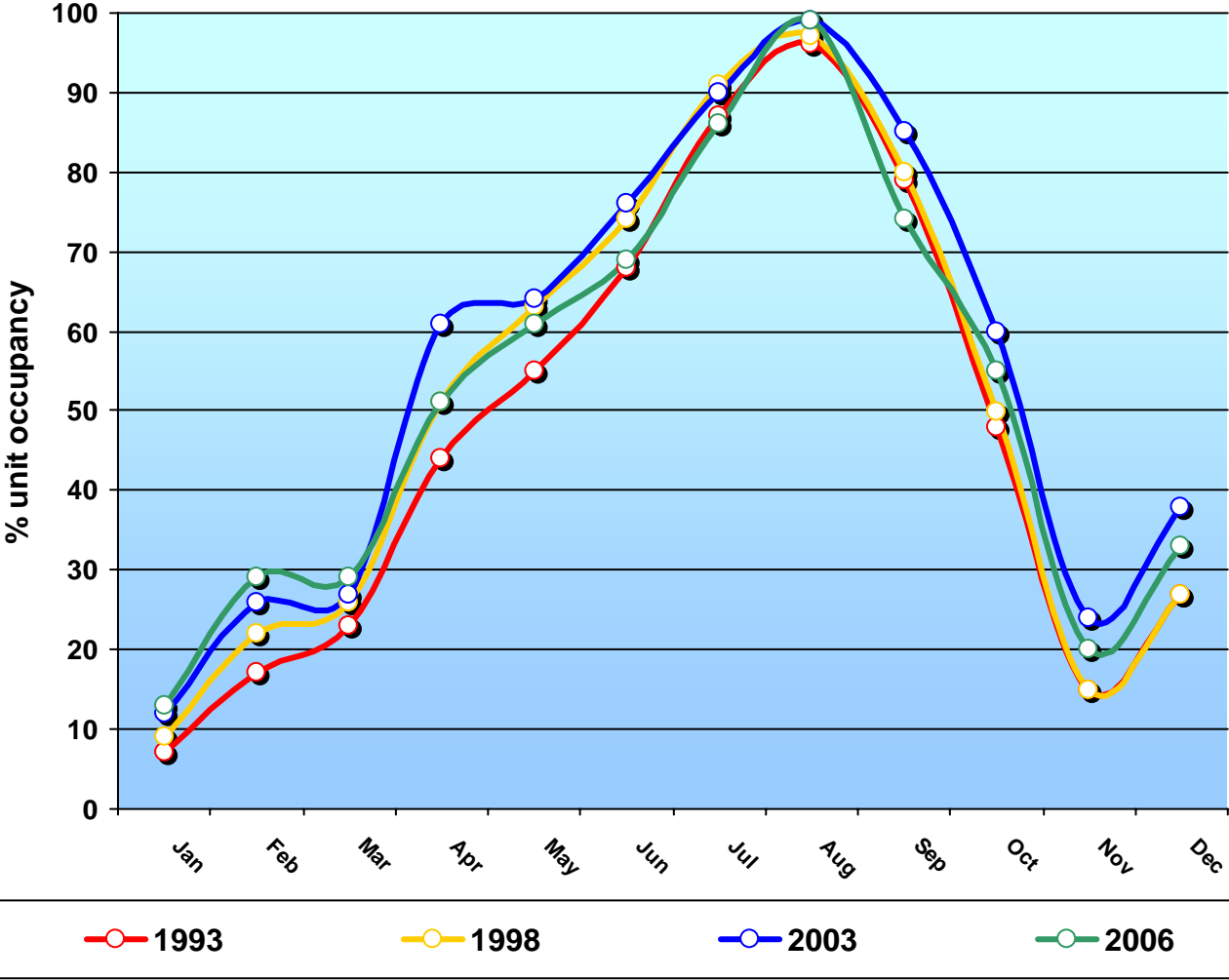
Occupation Rates in Cornwall

1993 – 2006

- 1. Occupancy Rates in Cornwall 1993 to 2006 – Unserviced Sector** **Page 2**
Graph & table illustrating % self-catering holiday home unit occupancy month by month
- 2. Occupancy Rates in Cornwall 1993 to 2006 – Serviced Sector** **Page 3**
Graph & table illustrating % room occupancy month by month

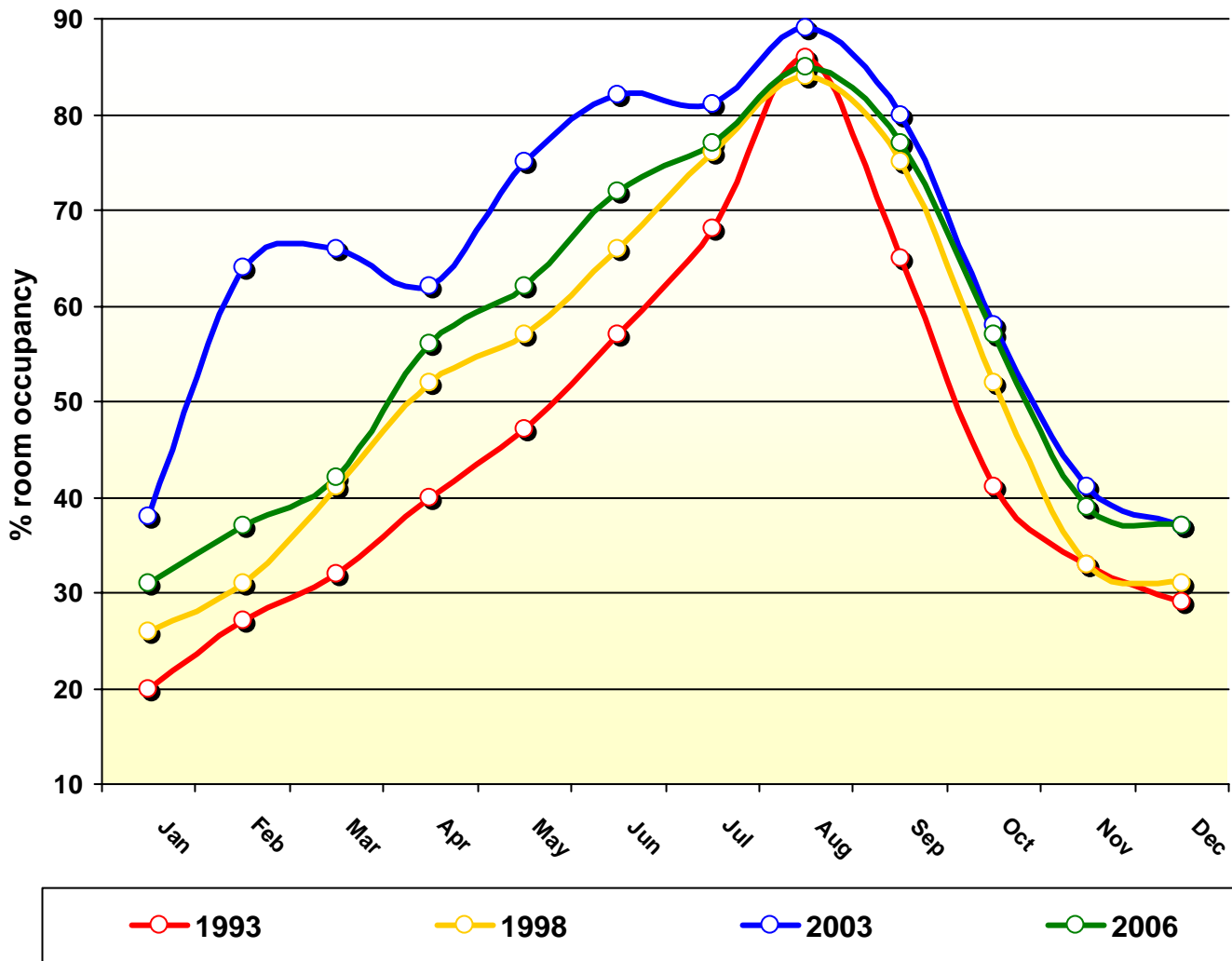
(Source: SWT Occupancy Survey)

1. Occupancy Rates in Cornwall 1993 to 2006 – Unserviced Sector:



	Jan	Feb	Mar	Apr	May	Jun	Jul	Aug	Sep	Oct	Nov	Dec
1993	7%	17%	23%	44%	55%	68%	87%	96%	79%	48%	15%	27%
1994	20%	25%	37%	61%	71%	78%	84%	97%	74%	41%	11%	25%
1995	9%	19%	22%	47%	62%	83%	90%	99%	76%	49%	21%	28%
1996	12%	20%	30%	44%	62%	84%	95%	97%	78%	57%	18%	34%
1997	11%	24%	39%	36%	56%	85%	94%	97%	77%	57%	18%	33%
1998	9%	22%	26%	51%	63%	74%	91%	97%	80%	50%	15%	27%
1999	12%	23%	30%	45%	62%	70%	85%	97%	80%	53%	20%	29%
2000	16%	23%	22%	53%	65%	71%	87%	99%	76%	54%	21%	30%
2001	9%	26%	23%	49%	61%	73%	89%	98%	83%	66%	27%	37%
2002	13%	31%	45%	41%	61%	86%	91%	95%	81%	66%	21%	38%
2003	12%	26%	27%	61%	64%	76%	90%	99%	85%	60%	24%	38%
2004	13%	26%	27%	52%	62%	72%	91%	95%	80%	51%	20%	32%
2005	18%	26%	39%	46%	67%	71%	82%	97%	80%	53%	22%	31%
2006	13%	29%	29%	51%	61%	69%	86%	99%	74%	55%	20%	33%

2. Occupancy Rates in Cornwall 1993 to 2006 – Serviced Sector:



	Jan	Feb	Mar	Apr	May	Jun	Jul	Aug	Sep	Oct	Nov	Dec
1993	20%	27%	32%	40%	47%	57%	68%	86%	65%	41%	33%	29%
1994	19%	27%	37%	45%	52%	59%	68%	79%	65%	48%	25%	25%
1995	17%	26%	36%	47%	53%	67%	74%	86%	70%	49%	32%	27%
1996	22%	32%	39%	44%	57%	68%	77%	89%	72%	52%	38%	27%
1997	24%	36%	48%	44%	61%	71%	77%	87%	74%	52%	36%	33%
1998	26%	31%	41%	52%	57%	66%	76%	84%	75%	52%	33%	31%
1999	30%	35%	41%	50%	59%	65%	71%	84%	72%	54%	44%	30%
2000	29%	34%	41%	52%	62%	67%	74%	82%	67%	49%	32%	30%
2001	27%	27%	32%	49%	63%	70%	79%	87%	80%	60%	43%	38%
2002	34%	46%	50%	55%	69%	79%	83%	90%	83%	61%	43%	36%
2003	38%	64%	66%	62%	75%	82%	81%	89%	80%	58%	41%	37%
2004	31%	40%	41%	56%	63%	75%	79%	82%	73%	55%	39%	35%
2005	34%	43%	47%	55%	65%	73%	75%	80%	75%	60%	49%	39%
2006	31%	37%	42%	56%	62%	72%	77%	85%	77%	57%	39%	37%